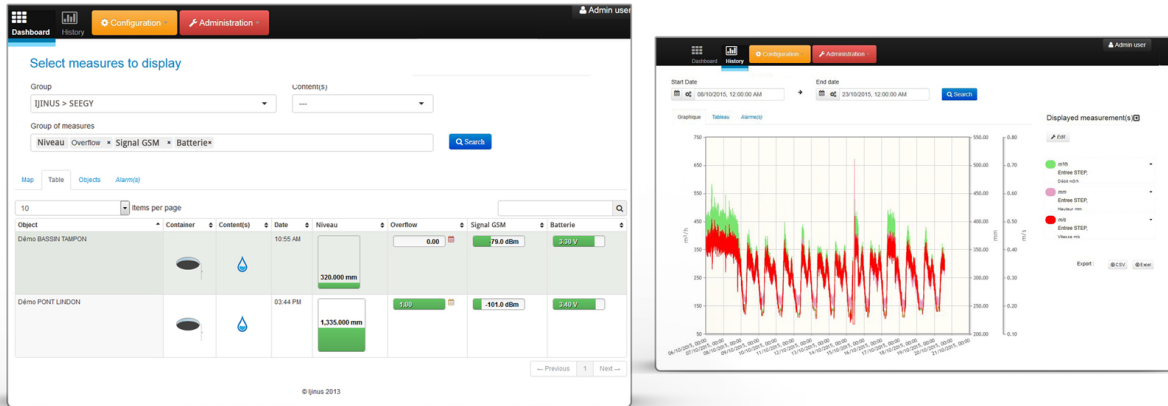




## Ijitrack.com : Web-based data monitoring platform



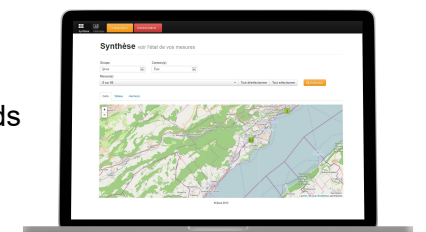
- Simple and intuitive interface
- Protected data access
- Quick sensor configuration
- Data displayed on map, in table and objet
- Automatic alarms via SMS, Email
- Customers account management
- Export data to Csv, Xls formats
- Multi-axis and multi-curves graphs

### Fonctionnalités :

**Web Interface to supervise all your data, manage your clients accounts, export data in detailed reports**

Ijitrack allows you to generate alarms on level, overflow, flow rate, unusual parameters. For each alarm you can set a high and low threshold. Alarms are visible on **ijitrack.com** and can be transmitted by mail, SMS

- Centralization and timestamp of data, displayed in summary and history pages
- Simplified creation and management of customer accounts, visible by groups in tree view
- Import data by SMS, GPRS (FTP), 3G, 4G (LTE-M /NB-IoT)
- User rôle management : administrator, éditeur, viewer, group
- Automatic alarms sending via Email, SMS (up to 20 recipients)
- Data export in Xls and Csv files
- Export automatizable by HTTP requests
- Graphical display of data : Multi-axis graph - up to 7 curves - alarm thresholds (Each user can set his own alarm thresholds)
- Mobile app available for IOS & Android



## Specifications :

- Web interface in Java, HTML, Java script
- Compatibility with : Chrome, Firefox, Explorer, Safari, Edge. PC, tablettes and mobiles
- Compatibles devices : data sent by Ijinus sensors, data loggers et other devices.
- Secured Https connexion : 128 bits encryption

## WijiApp mobile App for Android & IOS:

**Quick integration in Ijitrack :** Quickly configure your sensors and loggers by scanning the QR code of the product label using WijiApp. Edit the group it belongs. Then thanks to your mobile GPS you can place it on the map.



**Data vizualization :** In addition to quickly adding sensors to your Ijitrack account, the App displays, among other things, the latest data sent by the sensors, the alarms you have configured, the pictures taken during the installation, etc. ...

**Real time alarm notifications from Ijitrack :** Notification appear in real time, even if the application is closed. You manage the alerts as under the web monitoring platform Ijitrack

**Download the WijiApp on Android or IOS store :**



OneDrive

Download the App freely from the App Store and OneDrive or scan the QR Code

